



# El Dorado County Fire Protection District



## Station 25 Run Statistics June 2024

### ENGINE 25: 292 Total Calls

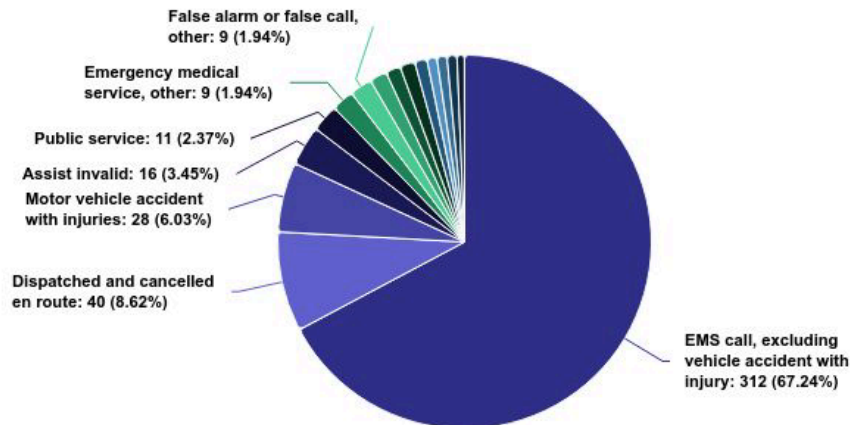
- Medical Aid- 214
- Fire- 13
- Traffic Collision- 23
- Public Assist - 15
- Misc. – 25
- Move/Cover– 2

### MEDIC 25: 304 Total Calls

- Medical Aid- 248
- Fire- 3
- Traffic Collision- 14
- Transfer -7
- Misc.- 2
- Move/Cover - 30

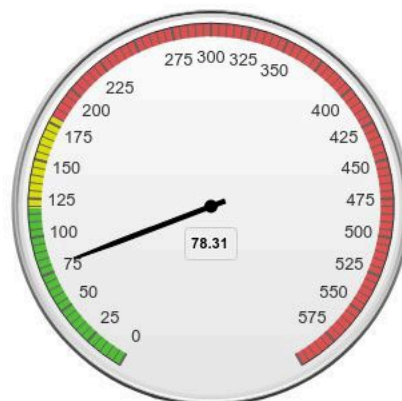
### Incident Types (Top 15)

Jun 01, 2024 to Jun 30, 2024



### Unit Average Turnout Time (Seconds)

Jun 01, 2024 to Jun 30, 2024



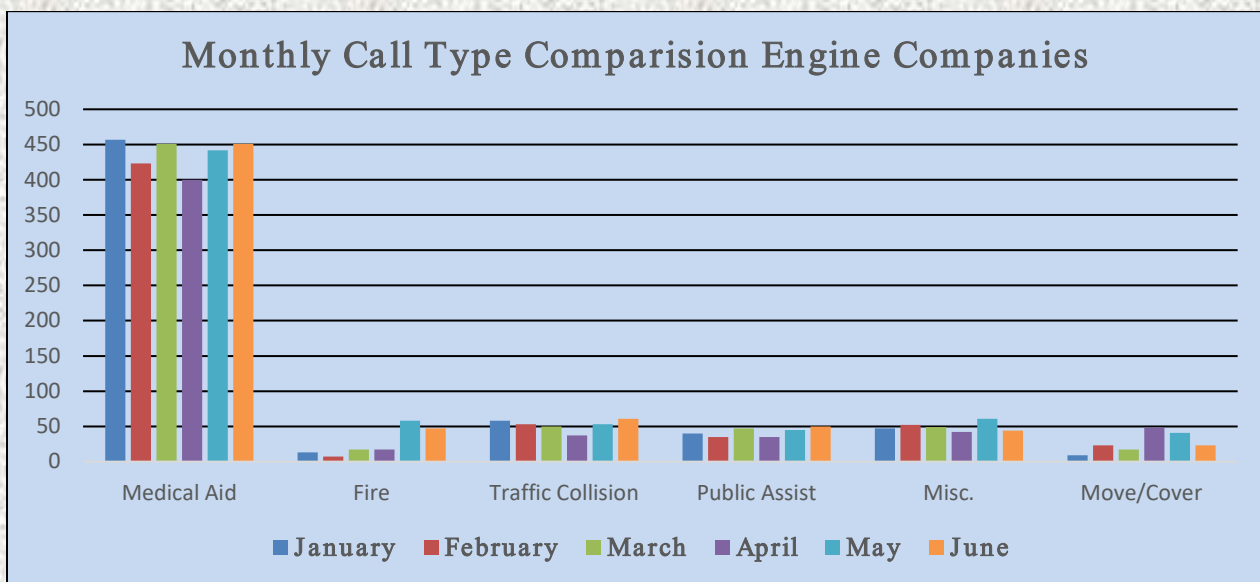
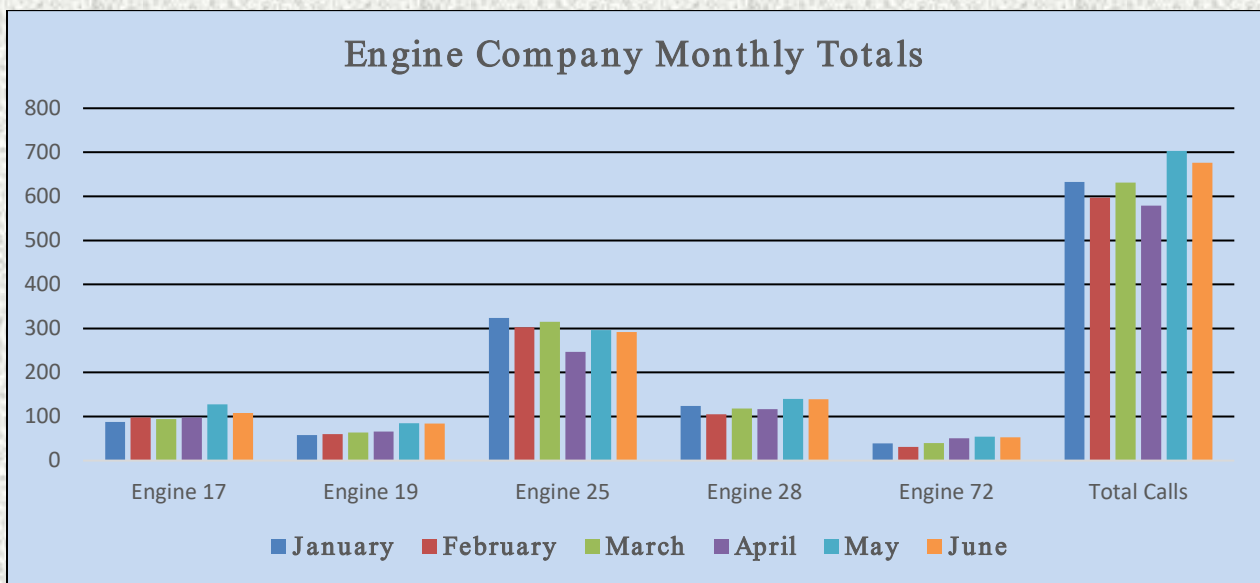


# El Dorado County Fire Protection District



## Monthly Run Statistics and Call Break Down June 2024 Engine Companies and Medic Units

Total Responses for Engine Companies: 676

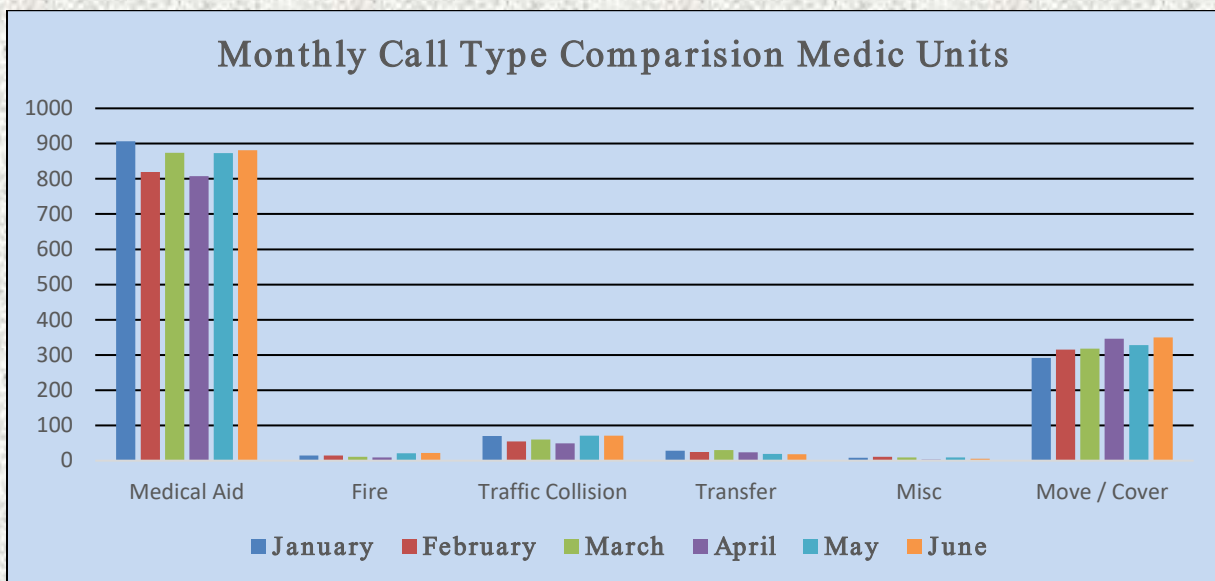
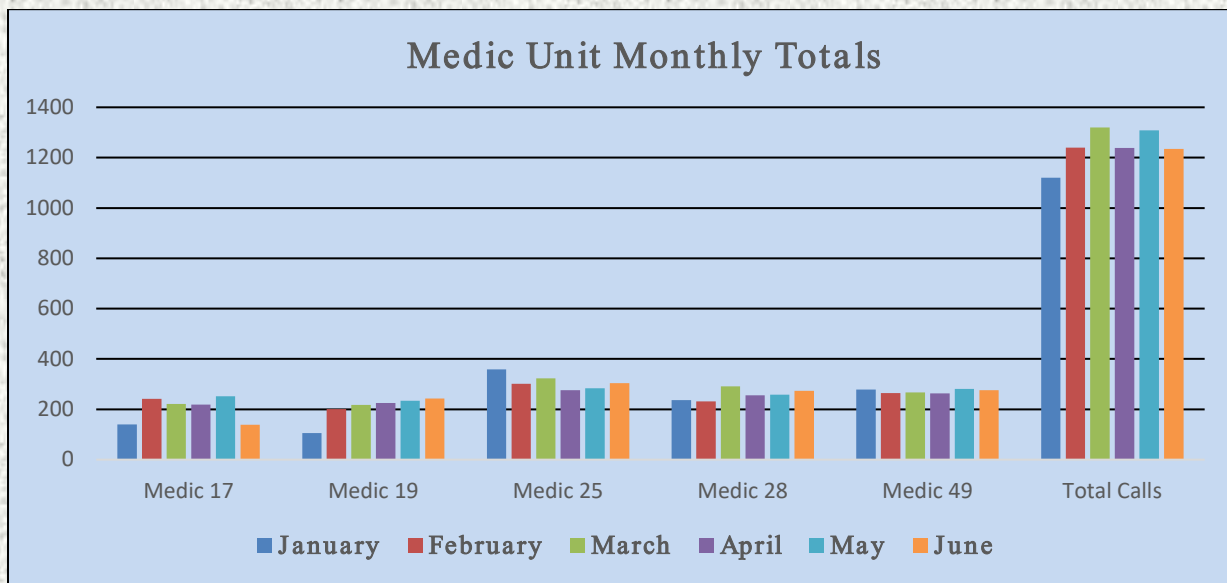




# El Dorado County Fire Protection District

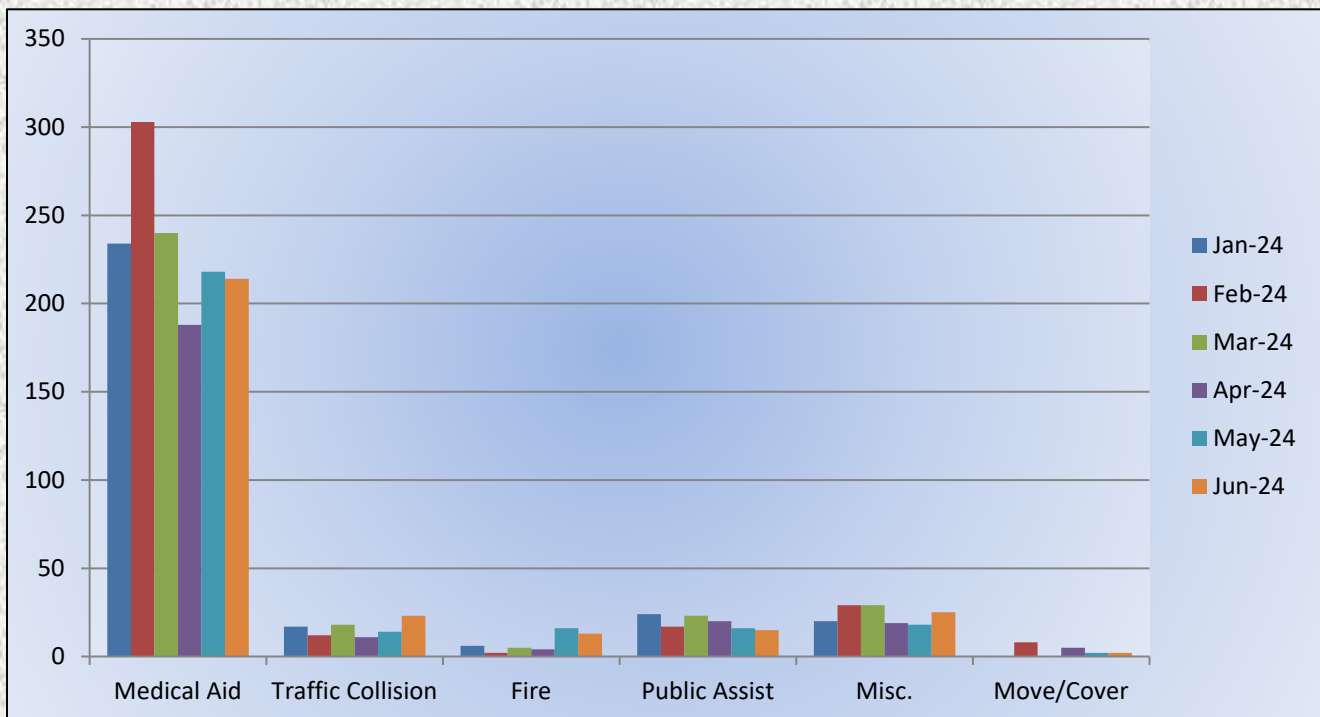


Total Responses for Medic Units: 1,235





## Engine 25 Monthly Statistics Comparison





# Medic 25 Monthly Statistics Comparison

